



Like Alfa, the Omega pointe shoe is ideal for the **moderate-shaped Greek or Roman foot**, where the second toe predominates or two toes of equal length, as both pointe shoes share the same last. Omega, manufactured in the **turn construction** method (made inside out) with external pleats, is English shoemaking traditionalism at its best. Noted for its clean appearance when placed on the foot, Omega's **elasticized binding** enhances the dancers' leg line to become a natural foot extension.

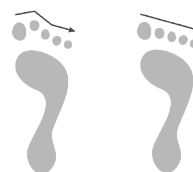
Additionally, a **moderate crown height** adds to Omega's eloquent line. A **reduction of the side and heel measurement** and an open **U shape throat** display the dancers' arch to its maximum potential. Its **reinforced platform ensures extended wear**, while a silicone gel tip pad applied to the inside of the shoe's platform offers additional comfort. Lateral support at the metatarsals is due to Omega's **supportive wings**. A polyurethane (microfiber) insole and back-quarter panels prevent "sliding" in the shoe and wicks away moisture.

An **embossed leather outsole** marked with a decorative design, including the size, width, and shank strength, provides traction.

Omega is available with pre-stitched, high-quality **satin or cotton ribbons** free of charge.

Omega's sizing follows the **UK sizing system**.

Elasticized binding without drawstring



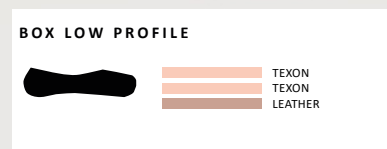
Greek-Square Roman

OMEGA SOFT

Omega Soft shank provides light support to the arch and is ideal for dancers with tight ligaments or an underdeveloped arch. In most cases, a "beginner" who is starting pointe work will be best served with a soft shank. The minimal support provided by a soft shank will allow the dancer to stretch their ligaments to enable the dancer to stand fully "on top" of their platform. In other cases, a "seasoned" dancer with very tight ligaments may continue to wear a soft shank.

 SALMON

SIZE	WIDTH	FREE RIBBONS
3 to 8	medium wide extra wide x extra wide	X XX XXX XXXX satin or cotton



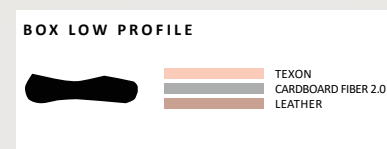
BINDING : ELASTIC BINDING

OMEGA MEDIUM

Omega Medium shank provides ample support to the arch for most dancers. For dancers with pliable ligaments, a medium shank allows them to stand "on top" of their platform with great ease.

 SALMON

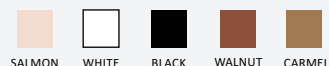
SIZE	WIDTH	FREE RIBBONS
3 to 8	medium wide extra wide x extra wide	X XX XXX XXXX satin or cotton



BINDING : ELASTIC BINDING

OMEGA POINTE MORE OPTIONS

The Salmon, Walnut and Carmel colors will match your skin tone. The White and Black colors will be more adapted to the needs of your dance performances.



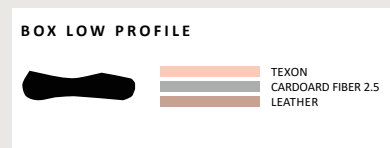
OMEGA HARD

Omega Hard shank supports a malleable arch with stretched ligaments. For the best support for this type of arch, a hard shank will provide the most significant support. In addition, the shank must conform to the foot's arch. A three-quarter cut shank provides the utmost contact to the arch for maximum support while "en pointe."



SALMON

SIZE	WIDTH	FREE RIBBONS
3 to 8	medium wide extra wide x extra wide	X XX XXX XXXX
		satin or cotton



BINDING : ELASTIC BINDING

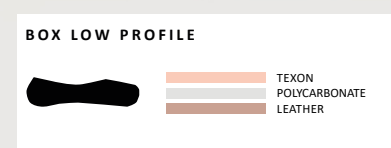
OMEGA REINFORCED HARD

Omega Reinforced Hard shank supports a highly flexible foot with stretched ligaments - either through the development of the arch or born with loose ligaments. A reinforced hard shank will provide the ultimate support to the arch. A half shank is best suited for this type of arch to ensure that the shank will conform entirely to the arch.



SALMON

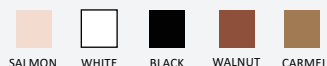
SIZE	WIDTH	FREE RIBBONS
3 to 8	medium wide extra wide x extra wide	X XX XXX XXXX
		satin or cotton



BINDING : ELASTIC BINDING

OMEGA POINTE MORE OPTIONS

The Salmon, Walnut and Carmel colors will match your skin tone. The White and Black colors will be more adapted to the needs of your dance performances.



MADE TO MEASURE

MAKING YOUR OWN CUSTOM-TAILORED SHOES

Wear Moi addresses dancers' individual needs through its Made to Measure department. Be it structural needs of the foot or esthetic preferences visually, "Custom-tailored" pointe shoes can make all the difference. Many dancers from pre-professional to ballerinas of renowned ballet companies, already benefit from this service.

The most requested alterations to the upper include **higher or lower vamp, side, and or heel measurements**. **Bindings** can be produced with an elasticized casing, or a cotton drawstring encased in a cotton binding- the **drawstring may be placed on inside** if requested. For dancers with a narrower heel in proportion to the ball of the foot, a **pin heel** may be beneficial. Shanks may be modified at the back of the shank. Lateral support at the ball of the foot may be adjusted with **lower, higher, firmer, or lighter wings**.

For your total satisfaction, we will work with you to find the pointe shoes that best meet your needs. And we are at your side to support you as you pursue our shared passion, dancing without limits...

Wear Moi

Custom Tailored Pointe Shoes

Date : ... / ... / ...

Fitter's name : _____

Name : _____

Address : _____

Phone : _____

E-Mail : _____

La Pointe TAPPER ☐ ALFA ☐

La Pointe SQUARE ☐ OMEGA ☐

SHOE SIZE	
WIDTH	N X XX XXX XXXX XXXXX
SHANK	XS S M H RH RXH
INSOLE	F 3/4 1/2
DRAWSTRING	ELASTIC COTTON
BORDER**	ELASTICATED*** CLASSIC
RIBBON	SATIN COTTON NO
VAMP*	
CUT**	U V
HEEL*	
SIDE*	
WINGS**	STANDARD HIGH
PLATFORM*	

*Measurement in millimeter **La Pointe Only ***No Drawstring

Comments : _____

Mesures

